

Section VII

..... **Appendices**

Hawai'i State Department of Health

Department and Phone Number Directory

DEPARTMENT OF HEALTH 586-4400
 Web address: www.hawaii.gov/doh

ADMINISTRATION

Administrative Services Office 586-4550
 Affirmative Action Office 586-4616
 Communications Office 586-4442
 District Health Offices
 Hawai'i Island 974-6006
 Kaua'i 241-3614
 Maui 934-8200
 Moloka'i 984-8264
 Lāna'i 565-7114
 Executive Office on Aging (EOA) 586-0100
 Web Address: www2.state.hi.us/ea/
 Health Information Systems Office 586-4450
 Office of Health Care Assurance 586-4080
 Office of Health Status Monitoring 586-4600
 Office of Planning, Policy & Program Dev. 586-4188
 Personnel Office 586-4520
 State Laboratories Division 453-6652

HEALTH RESOURCES ADMINISTRATION

Communicable Disease Division 586-4580
 Hansen's Disease Branch 733-9831
 Hansen's Disease Community Program 733-9831
 Hale Mahalu Hospital 733-8080
 Kalaupapa Administration 567-6613
 Kalaupapa Care Home 567-6911
 STD/AIDS Prevention Branch 733-9010
 Diamond Head STD/HIV Clinic 733-9281
 Tuberculosis Control Branch 832-5737
 Community Health Division 586-4131
 Chronic Disease Mgmt. & Control Branch 586-4609
 Public Health Nursing Branch 586-4620
 Developmental Disabilities Division 586-5840
 Case Management & Info. Services Branch 733-9172
 Developmental Disabilities Services Branch 453-6301
 Disease Outbreak Control Division 586-4586
 Bioterrorism Preparedness Branch 587-6845
 Disease Investigations Branch 587-6568
 Immunization Branch 586-8300
 Web Address: www.vaxhawaii.com
 Emergency Medical Services System Branch 733-9210
 Injury Prevention & Control Program 586-5940
 Family Health Services Division 586-4122
 Children with Special Needs Branch 733-9055
 Maternal & Child Health Branch 733-9022
 Women, Infant & Children Services Branch 586-8175

BEHAVIORAL HEALTH ADMINISTRATION

Alcohol & Drug Abuse Division 692-7506
 Child & Adolescent Mental Health Division 733-9339
 CAMHD Family Guidance Centers
 • Central O'ahu Family Guidance Center 453-5900

• Diamond Head Family Guidance Center 733-9393
 • Leeward O'ahu Family Guidance Center 692-7700
 • Windward O'ahu Family Guidance Center 233-3772
 • Hawai'i Family Guidance Center 933-0610
 • Kaua'i Family Guidance Center 274-3883
 • Maui Family Guidance Center 873-3361
 Adult Mental Health Division 586-4686
 Hawai'i State Hospital 247-2191
 AMHD Community Mental Health Centers
 • O'ahu 832-5770
 • Hawai'i 974-4300
 • Maui 984-2150
 • Kaua'i 274-3190
 Access Line Referral Service
 O'ahu 832-3100
 Neighbor Islands 1-800-753-6879
 Courts & Corrections 832-1852

ENVIRONMENTAL HEALTH ADMINISTRATION

Environmental Administration 586-4424
 Compliance Assistance Office 586-4528
 Environmental Planning Office 586-4337
 Environmental Resource Office 586-4575
 Hazard Evaluation & Emergency Response 586-4249
 Environmental Health Services Division 586-4576
 Food & Drug 586-4725
 Noise, Radiation & Indoor Air Quality 586-4700
 Sanitation Branch 586-8000
 Vector Control Branch 483-2535
 Environmental Management Division 586-4304
 Clean Air Branch 586-4200
 Clean Water Branch 586-4309
 Safe Drinking Water Branch 586-4258
 Solid & Hazardous Waste Branch 586-4226
 Wastewater Branch 586-4294

ATTACHED AGENCIES

Disability & Communication Access Board 586-8121
 919 Ala Moana Boulevard, Room 101, Honolulu HI 96814
 Web Address: <http://www.state.hi.us/health/dcab/index.htm>
Hawai'i State Council on Developmental Disabilities 586-8100
 Email Address: hiddc@pixi.com
Hawai'i Health Information Corporation 733-4020
 Web Address: <http://www.hhic.org/>
The Office of Environmental Quality Control 586-4185
 Web Address: www.state.hi.us/health/oeqc/index.html
 E-mail Address: OEQC@mail.health.state.shi.us
State Health Planning & Development Agency 587-0787
 Web Address: <http://www.state.hi.us/health/shpda/index.htm>

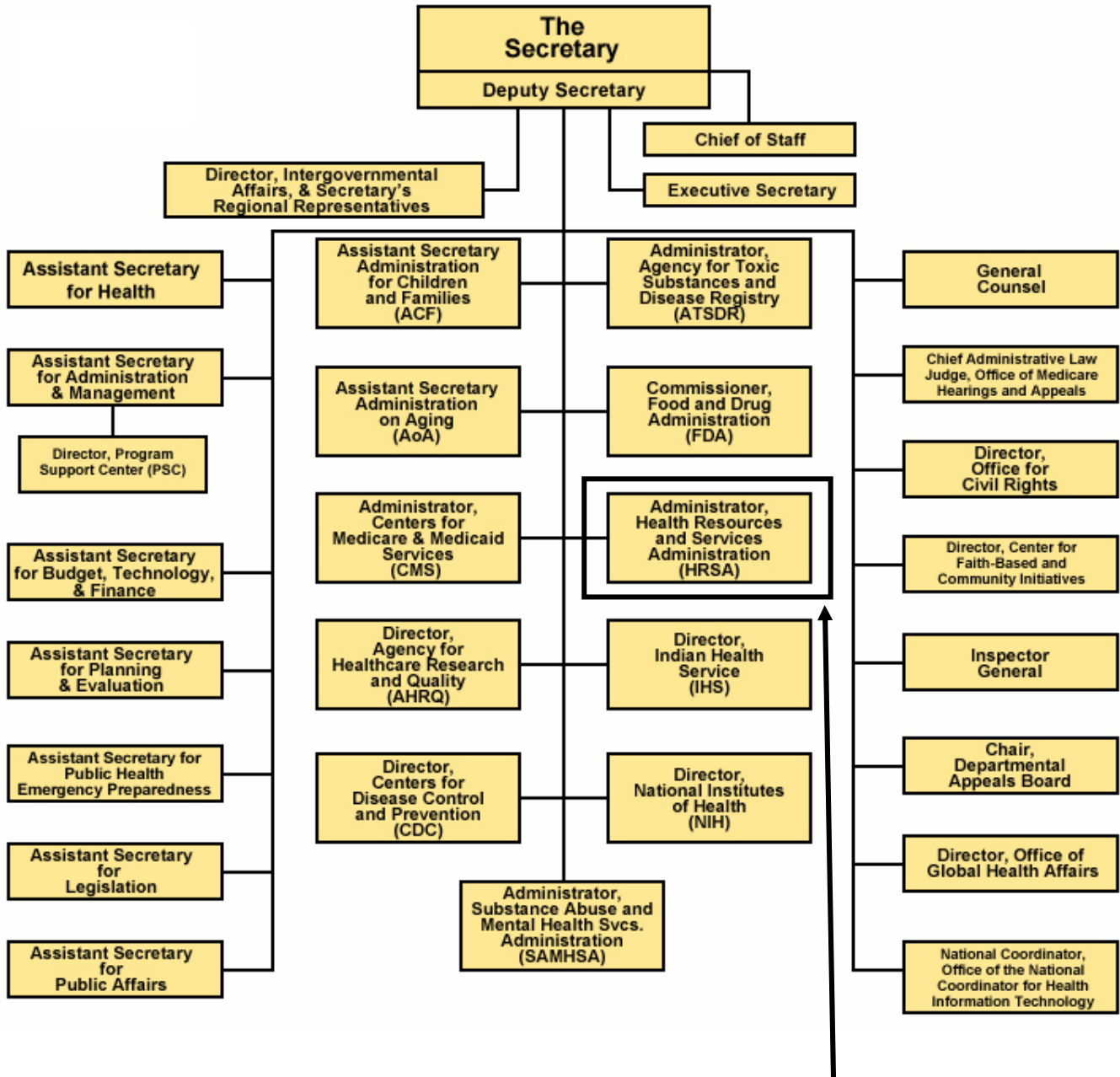
Hawai'i State Department of Health

www.hawaii.gov/doh/



U.S. Department of Health and Human Services (DHHS)

www.hhs.gov



Health Resources and Services Administration
(Primary funding source for Community Health Centers and Native Hawaiian Health Systems. See next page.)

U.S. Health Resources and Services Administration (HRSA)

www.hrsa.com

